



**QMiX<sup>®</sup> 2in1**  
IRRIGATING SOLUTION



GO THE EXTRA STEP **IN 1** EASY STEP.

*ONE-STEP SMEAR LAYER REMOVAL AND DISINFECTION.*

**DENTSPLY**  
TULSA DENTAL  
SPECIALTIES

# REMOVES SMEAR LAYER, BACTERIA AND DOUBT. IN 1 EASY STEP.

QMix® 2in1 irrigating solution is a single solution used as a final rinse after bleach for one-step smear layer removal and disinfection. Its nonantibiotic, premixed formula provides a “best practice” irrigation protocol in fewer steps for proven and effective irrigation made easy. Fast working, effective and affordable, QMix 2in1 irrigating solution delivers every reason to use it every case, every time.

	Removes Smear Layer	Kills Bacteria Including <i>E. faecalis</i>	1-step
<b>QMix® 2in1</b>	✓	✓	✓
EDTA w/ surfactant	X		
chlorhexidine		X	

Every case, every time. QMix 2in1 irrigating solution is the one premixed solution that meets all your requirements for effective post-NaOCl irrigation.

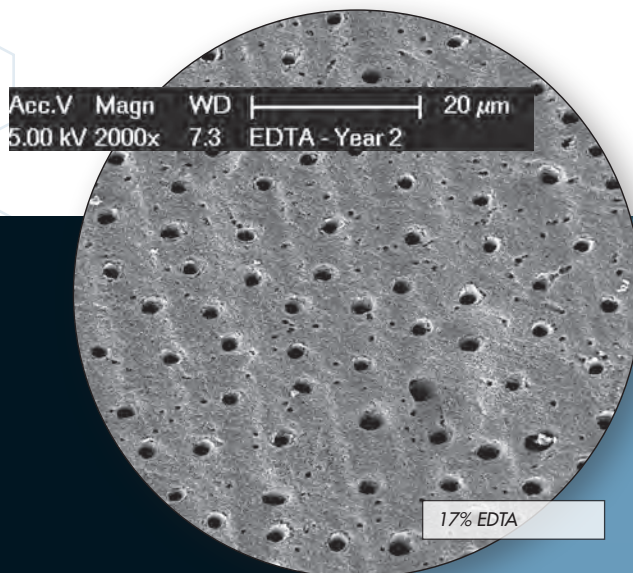
## SUPERIOR SMEAR LAYER REMOVAL.

Smear layer on instrumented canal walls harbors bacteria and obscures dentinal tubules. QMix 2in1 irrigating solution offers superior effectiveness at removing smear layer as 17% EDTA – yet it's gentle on dentin.

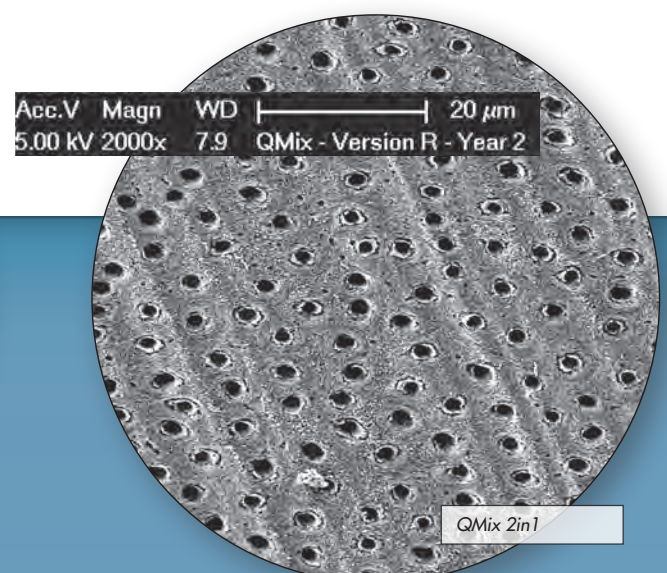
*“... superior to 17% EDTA in removing the smear layer in instrumented tooth roots.”*

— M. Jane Gillespie, PhD, Southern Illinois School of Dental Medicine

— John F. Hatton, DMD, St. Louis University Center For Advanced Dental Education



17% EDTA



QMix 2in1

SEMs at 2000x magnification from similar teeth at the same section depth, irrigated with 17% EDTA (final rinse, 60 sec) vs. QMix 2in1 (final rinse, 60 sec). Note preservation of peritubular cuffs with QMix 2in1 irrigating solution, demonstrating that QMix 2in1 completely removes smear layer but is gentler on dentin than 17% EDTA.

# KILLS 99.99%\* BACTERIA

\* (Independently confirmed by Nelson Labs; Time kill study protocol #STP0158)

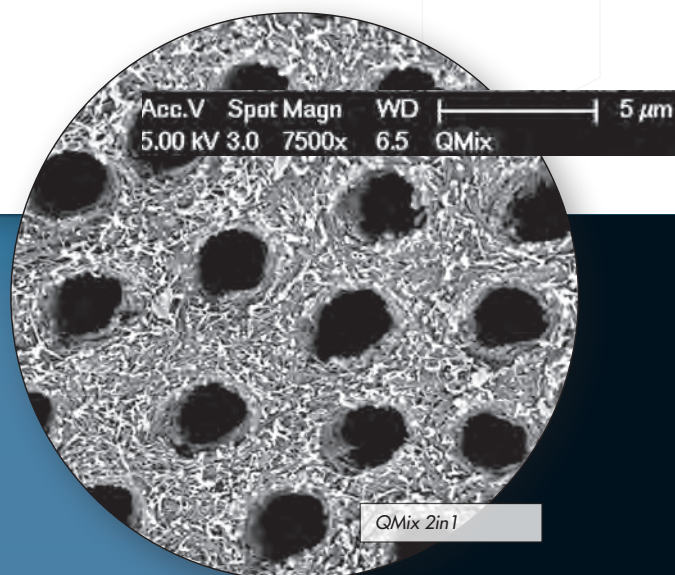
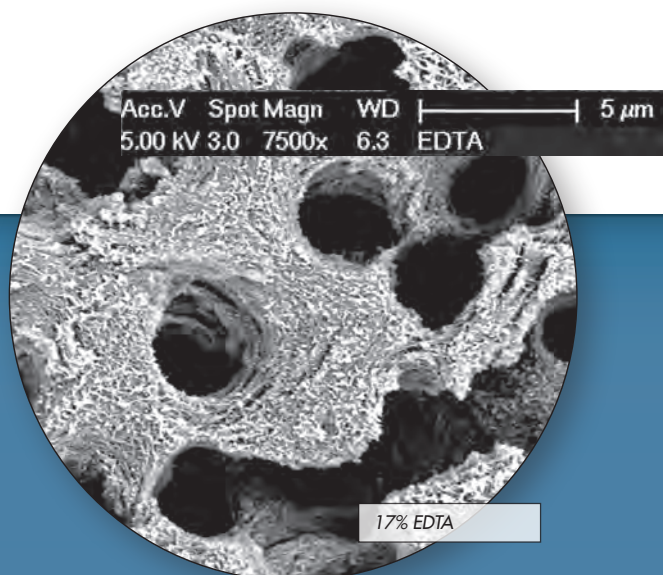
QMix 2in1 irrigating solution makes it easy to upgrade from basic irrigation to an advanced protocol for greater effectiveness. Its excellent bacteria-killing properties eliminate greater than 99.99% of planktonic bacteria – including the resistant species *Enterococcus faecalis*.

## READY TO USE, FAST WORKING.

QMix 2in1 irrigating solution offers a fast working time of 60-90 seconds for complete effectiveness. It is premixed and ready to use straight from the bottle with easy chair-side handling. And because QMix 2in1 irrigating solution removes smear layer and disinfects in one easy step, it saves time over using EDTA and chlorhexidine sequentially.

*“QMix also completely removes the smear layer and smear plugs. It is slightly less aggressive than EDTA in that there is less demineralization of the intact dentin collagen.”*

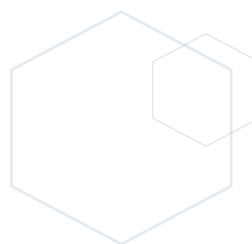
— Franklin R. Tay, BSc (Hons), PhD, Medical College of Georgia



SEMs at 7500x magnification from similar teeth at the same section depth, irrigated with 17% EDTA (final rinse, 90 sec) vs. QMix 2in1 (final rinse, 90 sec). Note that the dentinal walls are intact following treatment with QMix 2in1, indicating that it is gentler on dentin than 17% EDTA.

*Go the extra step in one easy step with QMix 2in1 irrigating solution.*

*Order yours today – and upgrade to proven and effective irrigation made easy, every time.*



*QMix 2in1 irrigating solution features a proprietary, premixed formulation of a chelating agent, an antimicrobial and a surfactant – all ingredients cleared by the FDA for dental use.*



**1-800-662-1202**  
For the latest information consult  
[www.TulsaDentalSpecialties.com](http://www.TulsaDentalSpecialties.com)

**DENTSPLY**  
TULSA DENTAL  
SPECIALTIES

*Available in two convenient premixed sizes.*

**Description**

**Reorder#**

60 mL (features Luer adapter)

QMIX60ML

480 mL

QMIX480ML